

June 2024



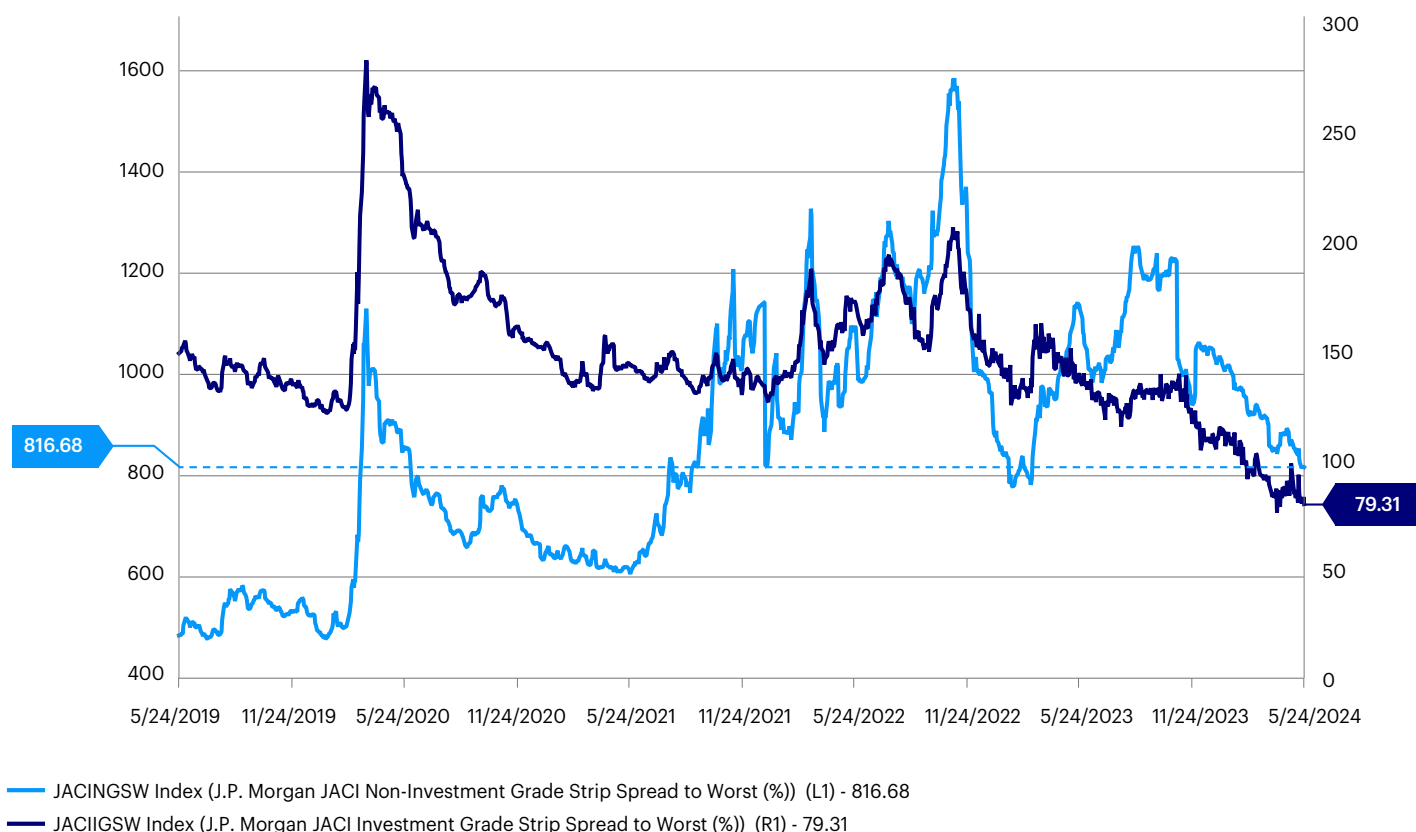
**Chris Lau**  
Senior Portfolio Manager  
Invesco Fixed Income

Asia investment grade (IG) credits held up relative well in 1H. In our view, solid fundamentals, strong technicals and the fact that all-in yields look attractive from a historical perspective will continue to support credit markets into 2H.

In recent months, the Federal Reserve (Fed) has been on hold given the strong labor market and stickier than expected inflation in the US. As such, the interest rate trajectory has not panned out as the market anticipated. We believe the Fed will find it very difficult to cut rates until the persistent inflation trend reverses and is set to keep its policy rate higher for longer. The latest hawkish FOMC minutes boosted US treasury yields and the US Dollar Index. Various FOMC members have questioned if policy rates are restrictive enough and have expressed a willingness to tighten policy further if warranted. However, we believe the chances of a rate hike are extremely slim. In our base case scenario, we still expect 1 to 2 rates cuts this year, with the first cut occurring in November 2024. In our view, the macro backdrop is still favorable for risky assets, but the pullback in expected Fed rate cuts could be a headwind for risky asset performance in the coming months.

Asia IG spreads continued to tighten in 1H, despite doing so at a much more moderate pace, and have reached a new historical tight year-to-date. The JP Morgan Asia Credit Index (JACI) IG spreads have tightened to 80 basis points (as of May 20, 2024), the tightest level since the Global Financial Crisis (GFC). From a spread perspective, Asia IG outperformed US IG on a relative value basis. Spreads between Asia IG relative to US IG have declined to -6 basis points while historical average spreads were in the range of +20 to +30 basis points.

**Figure 1 - JACI Investment Grade versus JACI High Yield (May 2019 – May 2024)**



Source: Bloomberg, data as of May 24, 2024.

This document is for Professional Clients only in Dubai, Jersey, Guernsey, the Isle of Man, Continental Europe (as defined in the important information at the end) and the UK; for Institutional Investors only in the United States; for Professional/Qualified/Sophisticated Investors in Bahrain, Kuwait, Oman, Qatar, Saudi Arabia and the United Arab Emirates; for Sophisticated or Professional Investors in Australia; in New Zealand for wholesale investors (as defined in the Financial Markets Conduct Act); for Investors in Hong Kong; for Qualified Institutional Investors in Japan; in Taiwan for Qualified Institutions/Sophisticated Investors; in Singapore for Institutional/Accredited Investors; for Qualified Institutional Investors and/or certain specific institutional investors in Thailand; for certain specific sovereign wealth funds and/or Qualified Domestic Institutional Investors approved by local regulators only in the People's Republic of China; for certain specific institutional investors in Malaysia upon request; for certain specific institutional investors in Brunei; for Qualified Professional Investors in Korea; for certain specific institutional investors in Indonesia; for qualified buyers in Philippines for informational purposes only; in Canada, this document is restricted to i) accredited investors and ii) permitted clients as defined under National Instrument 45-106 and 31-103 respectively. It is not intended for and should not be distributed to or relied upon by the public or retail investors. Please do not redistribute this document.

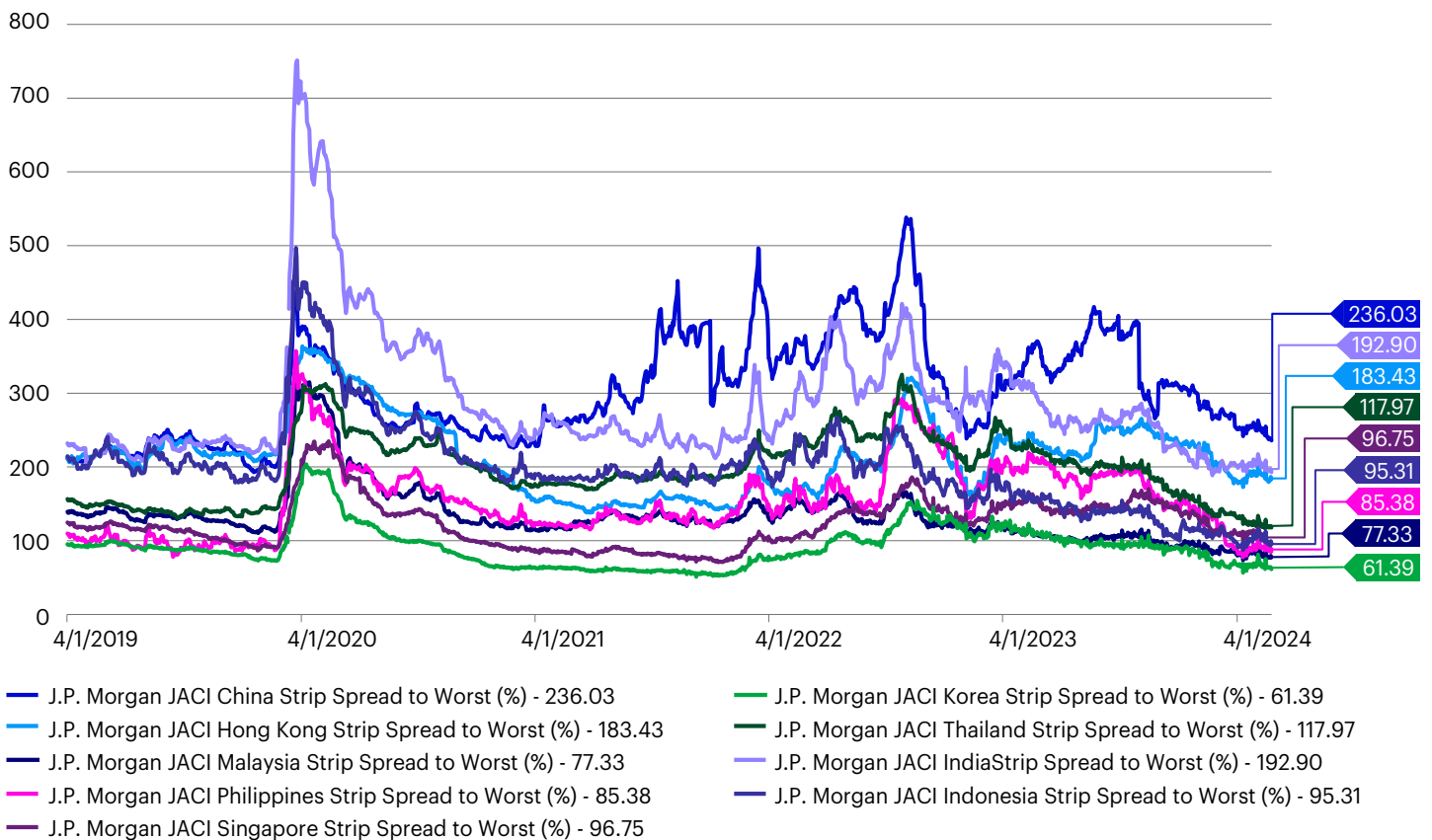
June 2024

While recent April inflation data showed a renewed disinflationary trend, the Fed will need to wait for more evidence to justify rate cuts. Current data suggests a delayed and cautious cutting cycle. In the medium term, we believe resilient growth, disinflation and the start of easing cycle would be a favorable environment for risk taking. Despite the tight credit spreads, Asia credit remains attractive from an all-in yield perspective after the recent US rates sell-off. We expect Asia IG bonds to continue to perform well in 2H benefiting from stable fundamentals and strong technicals. Receding rate volatility in the latter part of this year should support fund flows in 2H 2024, favoring high quality IG bonds due to attractive all-in yields.

In general, we believe most market participants are aware that current valuations are not cheap, however are still willing to hold on to their positions and would be keen to buy on dips. We think improving Asian economies and stable fundamentals among Asian corporates justify the current tight valuations. We expect that Asian IG credit spreads could be range-bound at +/- 10 basis points for the next half year. Our biggest concern is still on the rates side should ten-year US treasury yields trend toward 5%, and rates stay higher for longer.

Economic activities showed resilience in ex-China Asian economies and most Asian IG issuers have stable fundamentals. Headline and core inflation has continued to moderate across Asian economies so far this year. However, Asian local currencies have shown weakness year-to-date due to the unwinding of - Fed rate cut expectations and broad US dollar strength. The risk of delayed policy easing is rising, and Indonesia and Taiwan have already surprised the market with rate hikes this year. US dollar strength could force Asian central banks to maintain more restrictive policies to defend their currencies.

**Figure 2 – Asia credit spreads by country over the past five years (March 2019 – May 2024)**



Source: Bloomberg, data as of May 24, 2024.

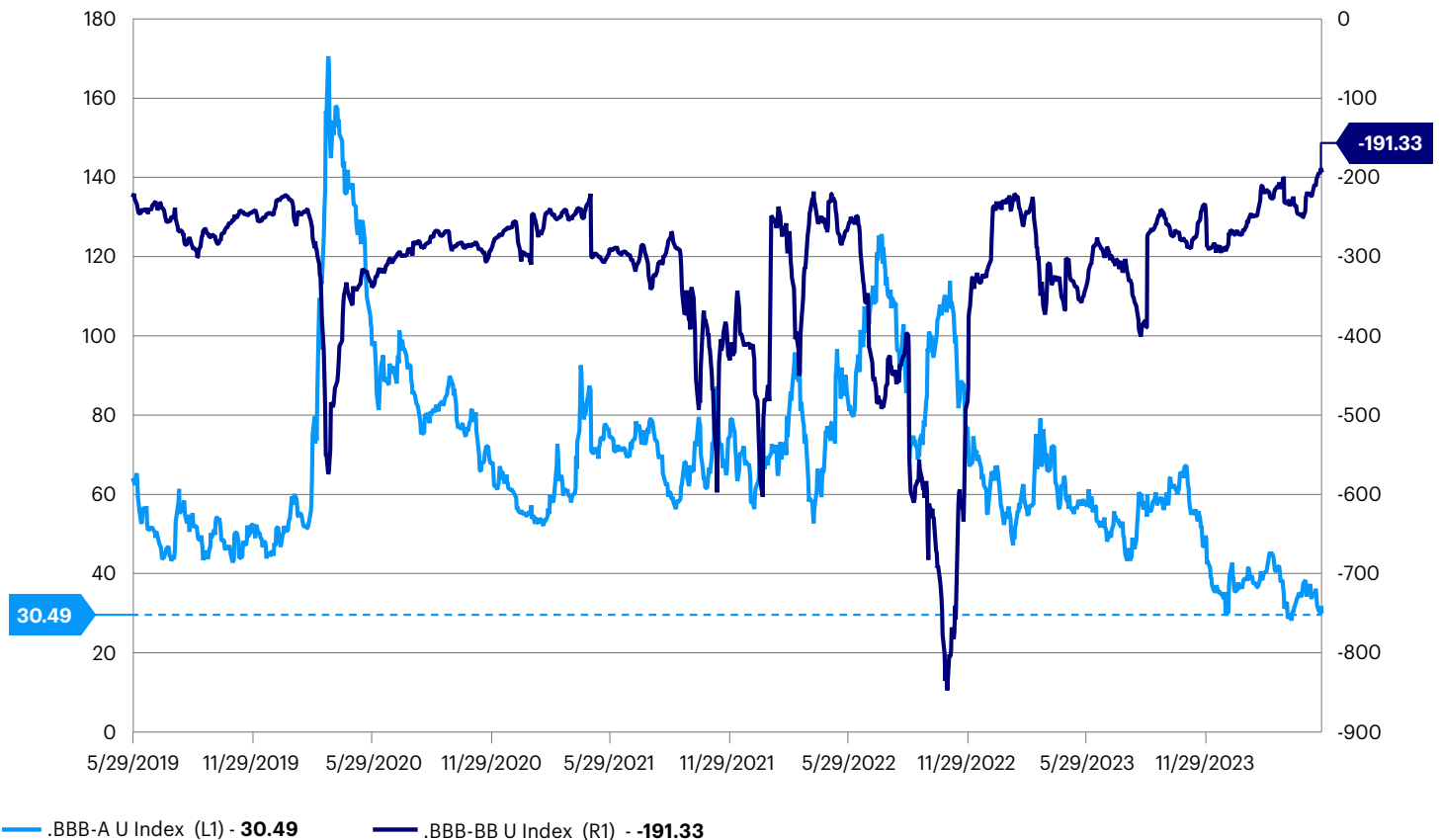
June 2024

Following the notable spread compression in the last few months, many BBB corporate credits are at multi-year tight. The broad market no longer offers decent risk-reward potential in our view. BBB corporate credits have tightened significantly year-to-date due to relative value buying interests and generally improving fundamentals. We recommend switching from BBB corporates to higher-quality names or BBB financials. Despite overall tight valuations, there are still pockets of value available in selected new issues including Korea, Japan, and Australian banks Tier-2. We also see attractive relative value in Hong Kong corporates and financials with cheap valuations. While Hong Kong credits had been underperforming the rest of Asia, the outlook for this market is stabilizing following the removal of extra stamp duties in the property sector. We believe refinancing may also benefit from improving local liquidity.

Technical remains strong in Asia's credit space due to negative net supply. We expect Asia IG primary supply to remain limited in most countries, particularly for corporates. Elevated US dollar funding costs will prompt Asian companies to use internal cash or turn to onshore funding channels for cheaper funding costs. This should further shrink the investment universe. We expect to see a divergence in credit spread performance between different Asian countries and China. Technical support for China onshore IG credits should remain strong given the government's accommodative policy stance. Yield differentials and limited new supply in the offshore market are also prompting onshore investors to increase their allocations to China offshore USD bonds, particularly state-owned enterprise bonds.

Asia IG credit should continue to be supported by stable fundamentals and strong technicals and we think yield carry looks attractive on an all-in perspective. While we do not see scope for material spread compression in Asia IG from current levels, we believe the relatively high all-in yields should continue to be supportive for the space in 2024. Most of the return from Asia IG will come from income carry.

**Figure 3 - Credit spread differences between BBB vs A & BBB vs BB (May 2019 – May 2024)**



Source: Bloomberg, data as of May 27, 2024.

June 2024

---

## Investment risks

The value of investments and any income will fluctuate (this may partly be the result of exchange rate fluctuations) and investors may not get back the full amount invested.

When investing in less developed countries, you should be prepared to accept significantly large fluctuations in value.

Investment in certain securities listed in China can involve significant regulatory constraints that may affect liquidity and/or investment performance.

---

## Important information

**This document is for Professional Clients only in Dubai, Jersey, Guernsey, the Isle of Man, Continental Europe (as defined below) and the UK; for Institutional Investors only in the United States; for Professional/Qualified/Sophisticated Investors in Bahrain, Kuwait, Oman, Qatar, Saudi Arabia and the United Arab Emirates; for Sophisticated or Professional Investors in Australia; in New Zealand for wholesale investors (as defined in the Financial Markets Conduct Act); for Investors in Hong Kong; for Qualified Institutional Investors in Japan; in Taiwan for Qualified Institutions/Sophisticated Investors; in Singapore for Institutional/Accredited Investors; for Qualified Institutional Investors and/or certain specific institutional investors in Thailand; for certain specific sovereign wealth funds and/or Qualified Domestic Institutional Investors approved by local regulators only in the People's Republic of China; for certain specific institutional investors in Malaysia upon request; for certain specific institutional investors in Brunei; for Qualified Professional Investors in Korea; for certain specific institutional investors in Indonesia; for qualified buyers in Philippines for informational purposes only; in Canada, this document is restricted to i) accredited investors and ii) permitted clients as defined under National Instrument 45-106 and 31-103 respectively. It is not intended for and should not be distributed to or relied upon by the public or retail investors. Please do not redistribute this document.**

Forward-looking statements are not a guarantee of future results. They involve risks, uncertainties, and assumptions. There can be no assurance that actual results will not differ materially from expectations.

This is marketing material and not financial advice. It is not intended as a recommendation to buy or sell any particular asset class, security, or strategy. Regulatory requirements that require impartiality of investment/investment strategy recommendations are therefore not applicable nor are any prohibitions to trade before publication.

By accepting this document, you consent to communicate with us in English, unless you inform us otherwise. Data as at May, 2024, unless otherwise stated.

For the distribution of this document, Continental Europe is defined as Austria, Belgium, Denmark, Finland, France, Germany, Greece, Italy, Ireland, Luxembourg, Netherlands, Norway, Portugal, Spain, Sweden, and Switzerland.

All articles in this publication are written, unless otherwise stated, by Invesco professionals. Views and opinions are based on current market conditions and are subject to change. This publication does not form part of any prospectus. This publication contains general information only and does not take into account individual objectives, taxation position or financial needs. Nor does this constitute a recommendation of the suitability of any investment strategy for a particular investor.

This publication is not an invitation to subscribe for shares in a fund nor is it to be construed as an offer to buy or sell any financial instruments. As with all investments, there are associated inherent risks. This publication is by way of information only. This document has been prepared only for those persons to whom Invesco has provided it. It should not be relied upon by anyone else and you may only reproduce, circulate and use this document (or any part of it) with the consent of Invesco. Asset management services are provided by Invesco in accordance with appropriate local legislation and regulations.

This publication is issued:

- in **Hong Kong** by Invesco Hong Kong Limited 景順投資管理有限公司, 45/F, Jardine House, 1 Connaught Place, Central, Hong Kong. This document has not been reviewed by the Securities and Futures Commission.
- in **Singapore** by Invesco Asset Management Singapore Ltd, 9 Raffles Place, #18-01 Republic Plaza, Singapore 048619.

June 2024

- in **Taiwan** by Invesco Taiwan Limited, 22F, No.1, Songzhi Road, Taipei 11047, Taiwan (0800-045-066). **Invesco Taiwan Limited is operated and managed independently.**
- in **Japan** by Invesco Asset Management (Japan) Limited, Roppongi Hills Mori Tower 14F, 6-10-1 Roppongi, Minato-ku, Tokyo 106-6114; Registration Number: The Director-General of Kanto Local Finance Bureau (Kin-sho) 306; Member of the Investment Trusts Association, Japan and the Japan Investment Advisers Association.
- in **Australia** by Invesco Australia Limited (ABN 48 001 693 232), Level 26, 333 Collins Street, Melbourne, Victoria, 3000, Australia which holds an Australian Financial Services Licence number 239916.

This document has been prepared only for those persons to whom Invesco has provided it. It should not be relied upon by anyone else. Information contained in this document may not have been prepared or tailored for an Australian audience and does not constitute an offer of a financial product in Australia. You may only reproduce, circulate and use this document (or any part of it) with the consent of Invesco.

The information in this document has been prepared without taking into account any investor's investment objectives, financial situation or particular needs. Before acting on the information the investor should consider its appropriateness having regard to their investment objectives, financial situation and needs.

You should note that this information:

- may contain references to dollar amounts which are not Australian dollars;
- may contain financial information which is not prepared in accordance with Australian law or practices;
- may not address risks associated with investment in foreign currency denominated investments; and
- does not address Australian tax issues.
- in **New Zealand** by Invesco Australia Limited (ABN 48 001 693 232), Level 26, 333 Collins Street, Melbourne, Victoria, 3000, Australia which holds an Australian Financial Services Licence number 239916.

This document is issued only to wholesale investors (as defined in the Financial Markets Conduct Act) in New Zealand to whom disclosure is not required under Part 3 of the Financial Markets Conduct Act. This document has been prepared only for those persons to whom it has been provided by Invesco.

It should not be relied upon by anyone else and must not be distributed to members of the public in New Zealand. Information contained in this document may not have been prepared or tailored for a New Zealand audience. You may only reproduce, circulate and use this document (or any part of it) with the consent of Invesco. This document does not constitute and should not be construed as an offer of, invitation or proposal to make an offer for, recommendation to apply for, an opinion or guidance on interests to members of the public in New Zealand. Applications or any requests for information from persons who are members of the public in New Zealand will not be accepted.

- in the **United States** by Invesco Advisers, Inc., 1331 Spring Street NW, Suite 2500, Atlanta, GA 30309, USA.
- in **Canada** by Invesco Canada Ltd. 120 Bloor Street East, Suite 700, Toronto, Ontario M4W 1B7.
- in **Austria and Germany** by Invesco Asset Management Deutschland GmbH, An der Welle 5, 60322 Frankfurt am Main, Germany.
- in **Belgium, Denmark, Finland, France, Greece, Italy, Ireland, Luxembourg, Netherlands, Norway, Portugal, Spain and Sweden** by Invesco Management S.A., President Building, 37A Avenue JF Kennedy, L-1855 Luxembourg, regulated by the Commission de Surveillance du Secteur Financier, Luxembourg.
- in **Dubai, Bahrain, Kuwait, Oman, Qatar, Saudi Arabia** and the **United Arab Emirates** by Invesco Asset Management Limited, Index Tower Level 6 - Unit 616, P.O. Box 506599, Al Mustaqbal Street, DIFC, Dubai, United Arab Emirates. Regulated by the Dubai Financial Services Authority.
- in the **Isle of Man, Jersey, Guernsey** and the **UK** by Invesco Asset Management Limited, Perpetual Park, Perpetual Park Drive, Henley-on-Thames, Oxfordshire, RG9 1HH, United Kingdom. Authorised and regulated by the Financial Conduct Authority.
- in **Switzerland** by Invesco Asset Management (Schweiz) AG, Talacker 34, 8001 Zurich, Switzerland.